

Follow your gut: An example of academic career paths in a globalizing world

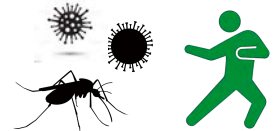


[My CV here](#)

Yasutsugu Suzuki, Ph.D.

Center for Marine Environmental Studies, Ehime University

Friday November 19th, 5:00pm - 6:20pm



[My Research interests here](#)

Key words: Research career path, International experience, Cultural/language barrier, Virus, Mosquito



Questionnaire in advance



Feel free to post your interests and expectations for this seminar in advance from [here](#) or the QR code ☺